

# Module I – Introduction

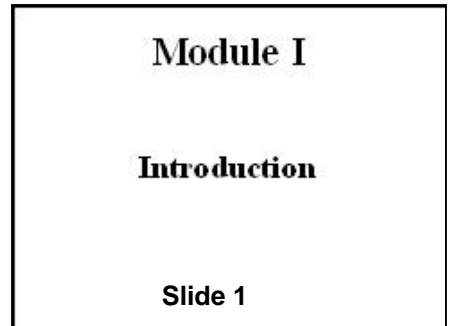
**Allotted Time – 38 Minutes**

## **Materials Needed**

Laptop with Powerpoint program & Projector  
Screen

## **Workshop Setup**

- Powerpoint Slide #1 should be displayed on the screen prior to the start of the session as participants enter the room
- Room may be arranged with 5 or 6 round tables to facilitate small group discussions



## **Opening Remarks**

**2 Minutes**

Introduce and validate self  
Introduce topic  
Set ground rules for the classroom  
Announce length and time for this session

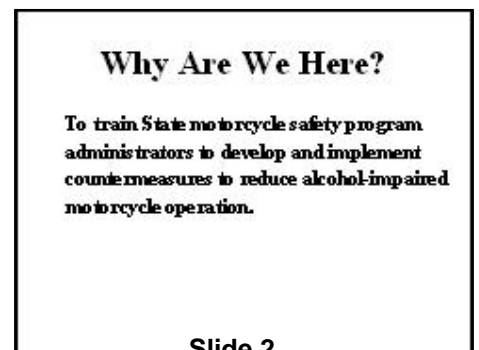
## **Activity One: Why Are We Here?**

**2 Minutes**

---

**Instructor note:** Show Powerpoint Slide #2 – Why Are We Here? Explain that the primary reason for this workshop is to assist the state motorcycle safety administrators realizing the benefits to developing and implementing countermeasures programs to combat alcohol-impaired motorcycle operation within their respective states.

---



# Module I – Introduction

## Activity Two: Discuss Module Objectives.

4 minutes

---

### **Instructor note:** Show Powerpoint **Slide #3 – Objectives**

Selectively reveal each of the four objectives and have a participant read aloud each objective as they are revealed. As an option, you can read the objectives to the class, but this doesn't foster participant participation.

---

### **Objectives:**

1. Present an overview of this workshop
2. Discern the significance of the motorcycle crash problem
3. Define “impaired driving” as it applies to this workshop
4. Explain the impact of impaired riding on the overall motorcycle crash problem

**Module Objectives**

- Present an overview of this workshop
- Discern the significance of the motorcycle crash problem
- Define “impaired driving” as it applies to this workshop
- Explain the impact of impaired riding on the overall motorcycle crash problem

Slide 3

## Activity Three: The Motorcycle Crash Problem

10 minutes

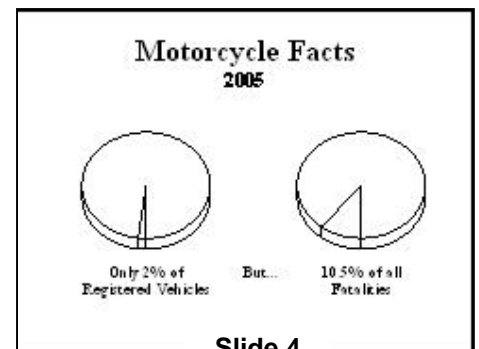
Explain that a majority of the program administrators are aware of the Fatality Analysis Reporting System (FARS) data associated with motorcycles and, therefore, an in-depth review of the data is not necessary in this workshop. It is, however, important to note the following 2005 motorcycle data from NHTSA's National Center for Statistics and Analysis (NCSA):

---

**Instructor note:** Show Powerpoint **Slide #4 – Motorcycle Facts 2005**. Briefly discuss and contrast the facts presented in the slide and listed below.

---

- Motorcycles represent only 2% of all registered vehicles; but, 10.5% of the fatalities (NCSA)

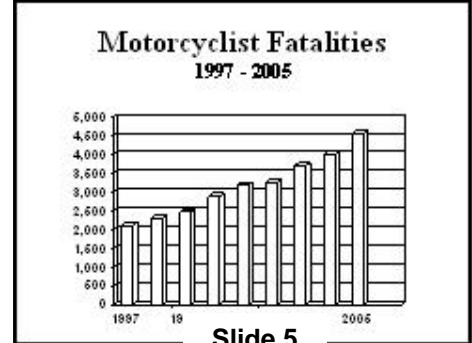


Slide 4

# Module I – Introduction

**Instructor note:** Show Powerpoint **Slide #5 – Motorcycle Fatalities 1997-2005**. Explain that the chart shows the increase in motorcycle fatalities between 1997 and 2005.

- Motorcycle fatalities increased 115% between 1997 and 2005 (NCSA)

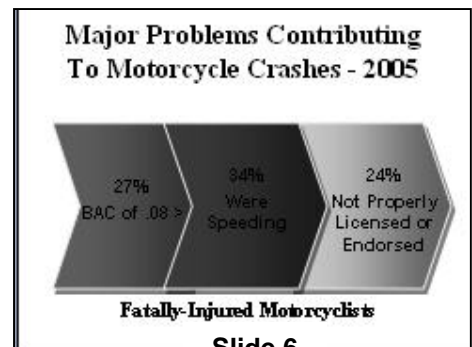


Slide 5

**Instructor note:** Show Powerpoint **Slide #6 – Major Problems Contributing To Motorcycle Crashes**. Explain that the slide illustrates three of the main contributing factors. Briefly discuss each point with the participants.

The major problems contributing to motorcycle crashes during 2005 were:

- 24% of fatally-injured motorcycle operators did not have the proper license or endorsement
- 27% of fatally-injured motorcyclists had a blood alcohol content (BAC) of .08 grams/deciliter (g/dL) or higher and another 7% had a BAC between .01 and .07 g/dL
- 34% of fatally-injured motorcyclists were speeding
- Other motorist awareness of motorcycles – 38% of the two-vehicle crashes (819 of 2,128 reported crashes) in 2005 involved a passenger vehicle turning left while the motorcycle was going straight, passing, or overtaking the vehicle. Both the passenger vehicle and motorcycle were going straight 28% of the time (593 of 2,128 reported crashes)



Slide 6

## **Activity Four: “Impaired Riding” Defined** 10 minutes

While there are many contributing factors associated with motorcycle crashes, fatalities, and injuries, the purpose of this workshop is to focus on impaired riding. But, before we go any further, let’s take a moment to define what we’re talking about. For discussion purposes, we are focusing on alcohol-related impairment.

# Module I – Introduction

**Instructor note: Poll the audience.** Go around the room selecting participants to ask what they think the word “impaired” means. Allow about two minutes for this activity. After you have received several answers, display Powerpoint **Slide #7 –Impairment Defined.** Ask a participant to read aloud the definition on the slide.

## Impairment Defined

“- being in a less than perfect or whole condition: as a : handicapped or functionally defective b: intoxicated by alcohol or narcotics <driving while *impaired*>”

-Merriam-Webster’s Medical Dictionary

Slide 7

Merriam-Webster’s Medical Dictionary defines the word “impaired” as:

- “being in a less than perfect or whole condition: as **a** : handicapped or functionally defective **b** : intoxicated by alcohol or narcotics <driving while *impaired*><sup>1</sup>

**Instructor note: Explain to participants** – After Slide 7 has been read, display Powerpoint **Slide 8 – NHTSA’s Definition of Impairment.** Read the slide to the class and emphasize the two key points at the end of the slide – BAC .01 to .07 = Alcohol Impaired and BAC .08 or higher = Alcohol-intoxicated.

## NHTSA’s Definition of Impairment

NHTSA defines a motor vehicle crash as being “alcohol-related” if at least one driver, motorcycle operator, or non-occupant involved in the crash is determined to have had a blood alcohol content (BAC) of .01 grams per deciliter (g/dL) or higher.

- BAC .01 to .07 = Alcohol-Impaired
- BAC .08 or higher = Alcohol-intoxicated

Slide 8

NHTSA defines “impairment” as “if at least one driver, motorcycle operator, or non-occupant involved in the crash is determined to have had a blood alcohol content (BAC) or .01 grams per deciliter (g/dL) or higher.”

## **Activity Five: The Impact of Impaired Riding on The Overall Motorcycle Crash Problem** **10 minutes**

As discussed earlier, 27% of fatally-injured motorcyclists had a BAC of .08 g/dL or higher and another 7% had a BAC between .01 and .07 g/dL. Simply stated, a third of all motorcycle-related fatalities during 2005 involved alcohol.

Let’s take a look at the FARS data available for your states. In your handouts is a CD that contains FARS data for every State for the past 10 years. The data contains BAC levels and matches that information with other factors, including gender, engine size, and weekend vs. weekday riding. Since most of you are already familiar with these numbers, we aren’t going to go put everyone to sleep by going into an in-depth examination of this information. Rather, we’re providing this CD to you as a resource and ask that you take a look at the data for your State and try to identify the events that may have driven the

<sup>1</sup> Impaired. (n.d.) *Merriam-Webster’s Medical Dictionary*. Retrieved November 16, 2006, from Dictionary.com website: <http://dictionary.reference.com/browse/impaired>

# **Module I – Introduction**

numbers for your State up or down. Were there programs in place that caused the number of alcohol-related fatalities to drop in your State? Or, were there programs that were discontinued causing increases in the number of alcohol-related fatalities in the following years?”